



ANUHA BUZZ



ANUHA BUZZ
Issue 8 | December 2021

Contents

- Page 1From the General Manager
- Page 2.....End of an Era
- Page 3-5.....Anuha Christmas Party
- Page 6-7.....LES Outing ArtVo
- Page 8.....Spreading Happiness
- Page 9.....Clever Crafters
- Page 10.....Volunteer Profile
- Page 11.....Cooking Thyme
- Page 12.....Tip Shop
- Page 13-14.....MRF Magic
- Page 15.....LES Activities
- Page 16.....Cottage Industries
- Page 17.....New Staff
- Page 18.....Christmas Spirit
- Page 19From the Chaplain
- Page 20.....Traffic Rule Refresher
- Page 21.....Step Back in Time
- Page 22.....MRF Christmas Message
- Page 23.....Deputy General Manager Christmas Message
- Page 24.....Contributions
- Page 25-30.....LES Outing Flyers

From the General Manager

As this year draws to a close I would like to thank you all for your patience and help while we struggled through another extraordinary year and the challenges it presented us. Input from every single one of you was valuable for the well-being of our Organisation. You were disciplined and you were still determined to work in all the fuss. I am really happy to have you as a part of the team.

We all hope and pray we can look forward to a better year in 2022. Although I can remember saying that last year too.

In recent weeks we have endured some major rain events. It is a timely reminder that if you are travelling on the roads do not drive though water. Remember the saying "If it's flooded forget it". My priority is the safety of everyone associated with Anuha and I don't need anyone to be taking unnecessary risks.

May you all have a blessed Christmas and a happy and safe New Year.

Robert Evelyn
CEO



End of an Era



Mandy and Tammy



Sam, Bill, Cathy and Mandy



Mandy receiving her gifts from Robert



In September we farewelled our longest serving supported employee, Amanda Harch. Mandy decided that she would like to slow down and retire.

Mandy worked both in the Cottage Industries kitchen and at the Material Recovery Facility for over 35 years. Mandy has been a very hardworking and valuable member of the Anuha team and will be greatly missed. Over the years Mandy has used her vast experience working with Anuha to help welcome and train new staff and ensure they are working safely.

We held a special farewell lunch for Mandy at the MRF with all of her co-workers invited. The Kitchen Creations team helped cater for the lunch and decorated an amazing cake for the occasion. Many of Mandy's co-workers and friends made speeches of how they enjoyed their time working together and how much she would be missed.

Thank you Mandy for all of your hard work and we wish you all the best in your retirement and hope you still pop in to say hi!

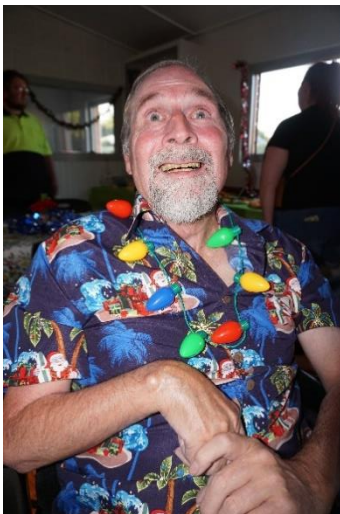


Jane, Nat, Sam, Tracey, Jacinta, Cathy, Mandy and Tammy

Anuha Christmas Party



Cathy and Tammy



Phil



Montana, Casey and Madison



Judith and Jenny



Travis

Friday night the 19th of November saw Anuha staff celebrating Christmas for 2021.

Over 80 staff and participants had a wonderful night of dancing, karaoke and photos in the Christmas photo booth. A lovely hot roast meal was provided by the Lutheran Church Guild. We had the works with roast chicken, roast beef, potato, pumpkin, cauliflower bake, peas and gravy. Followed by delicious sticky date pudding and apple crumble with ice cream.

It was a great night enjoyed by all.

Special thanks must go to LES Team Leaders Evelyn Ketterer, Rachel Barron, Janine Zischke and Tracy Worldon for organising the event. Also thank you to Nat Navie, Madison Van Rompaey and Jamie Haupt for doing an amazing job of decorating the hall and setting up the photo booth. A big thank you to Fay and her team for cooking and serving up a delicious meal and to Tanya Dittman for taking photos.

Here's to a Merry Christmas and a very happy new year in 2022!

Anuha Christmas Party



Chantelle and Mandy



Darelle



Montana, Casey, Maddy



Josh



Susanne



Courtney

Anuha Christmas Party



Justine



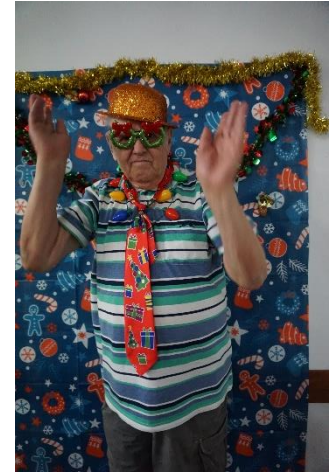
Ken, Margaret and Stan



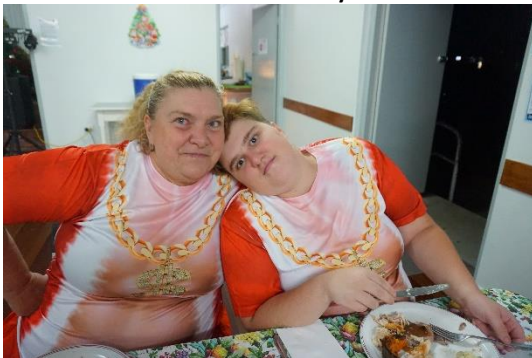
Jodie and Wendy



Mia and Skye



Chris



Allison and Temika



Damon



Judith



Maurie and Glen

LES ArtVo Outing

ArtVo is Gold Coast's very own immersive, 'trick-art' gallery! The LES Out and About group stepped into a world of optical illusions coming face to face with King Kong, fighting a dragon and surfing the ultimate pipelines. There were 6 huge rooms with a variety of different zones, each with its own spectacular theme.

ArtVo offers a unique experience where you not only touch the art, but *be* the art by simply striking a pose in front of your phone or camera. Needless to say the group had an amazing time with awesome photos to prove it! If you are interested in going on fun outings like this one please contact the Anuha office and see the attached outing flyers.



Josh



Damon



Group Shot!



Jodie



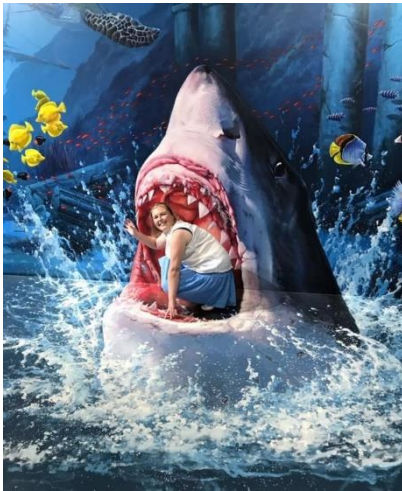
Johanna and Cathy



Chris



Keven



Sam



Charlie



Britney and Justine



Sam and Evelyn

Spreading Happiness



Lilly and her owner Charlie at home

We were lucky to have a visit from a service dog at the Tip Shop recently. Service dogs are trained to assist people who have various disabilities to manage personal and other tasks. The popular term for these dogs in Australia is assistance dogs.

Lilly is a 2 ½ year old German Shepherd that lives with Charlie and provides company and emotional support.

Craig really enjoyed having Lilly visit, he said it really brightened his day and Craig is keen for another visit. We hope to see Lilly in the store again soon!



Lilly at home



Craig and Lilly at the Tip Shop



Clever Crafters



Karnie with her soap creations

The Clever Crafters have been meeting twice a month on Tuesdays at the East Street office.

October saw our group creating beautiful pictures using embroidery and cross stitch.

In November gorgeous botanical handmade goats milk soaps were crafted complete with fragrance and colour. The office smelt delightful with all the aromas wafting in! Many of the crafters will be gifting these lovely soaps to their loved ones for Christmas.



The group busy creating Christmas decorations

The group is currently creating festive Christmas decorations and gifts.

If you are interested in getting involved please contact LES Team Leader Rachel Barron on 5462 3272.



Temika painting



Tracey's wall hanging



Karnie's Xmas tree decoration



Kristel's painting



DJ's decorations



Sam's colouring in



Skye's Christmas tree

Volunteer Profile

Name: Josh Smith



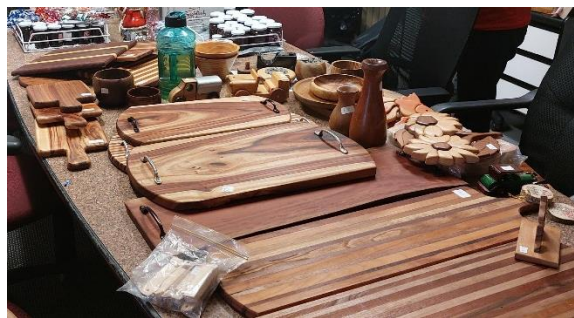
Josh with his woodwork for sale



Josh with a clock he crafted



Pens made by Josh



More of Josh's woodwork



The Tip Shop sign Josh made

Josh has been generously volunteering his time at the Anuha Tip Shop on Fridays for around a year now. You will have seen him in the newsletter previously showcasing some of his amazing woodwork.

Josh creates a range of beautiful wood crafts including toys, wall hangings, bowls, pens, cutting boards and serving platters.

These make wonderful gifts! Josh takes custom orders so if you have something in mind please make contact with Josh.

Recently Josh brought a load of his creations to the East Street office for staff to purchase as Christmas gifts. Josh has also crafted and donated some signage for the Tip Shop. It looks fantastic and very professionally done. Most Anuha staff also have pens made by Josh made from either acrylic or wood.

When not at the Tip shop or woodworking Josh helps on his families properties mowing, bottle feeding calves and other odd jobs.

Cooking Thyme



Shepherd's Pie

Would you like to learn how to cook delicious nutritious meals? Learn about nutrition, portion control and have fun along the way?

In September 2021 cooking classes started in the Anuha kitchen.

If you are interested please contact Trudi Laidlaw, Belinda Bowater or a team leader to guarantee your spot.



Delicious Lasagne

Jamie has been attending regular "Cooking Thyme" sessions with Belinda and has already learnt to cook lasagne, Shepherd's pie, cupcakes, porcupine meat balls and honey soy chicken.

He's been having a great time and developing some excellent skills in the kitchen. Jamie's family have also really been enjoying the meals he is bringing home for dinner.



Honey soy chicken



Jamie with his Christmas cupcakes

Anuha Tipshop



Funky couch and other wares



Piles of Christmas decorations



Plenty of items for sale

Merry Christmas and a Happy New Year from all the team at the Tip Shop.

We have had a big year and lots of changes to make it more enjoyable for you to shop with us.

The shop has lots of great gift ideas for the kids, house and garden, something for everyone. We also have loads of Christmas decorations to decorate your trees and homes.

Look out 2022 it's going to be a bigger, better year!

So pop on down say G'day and grab a bargain.
Have a safe holiday everyone.

Our team always aims for:

CLEANLINESS, FRIENDLINESS AND SERVICE.

Take care of each other.

ANUHA Tipshop Team

"WHERE THE FIRE NEVER GOES OUT"



Josh and Craig displaying the Christmas decorations



MRF Magic

PRODUCTION LINE

The Production Workers have been working hard these past few months, striving and pushing through the recycling pile with an ideal goal of getting ahead of the recycling coming up to Christmas, which is our busiest time of year. We make sure we have fun while we are working though!



Darelle, Ben, Andrew, Tammy, Craig



Keven, Scott, Craig, Andrew



DRIVERS / OPERATORS

We have a new job role for one of our staff members this month. JODIE VAN ANSEM, Jodie has taken on the role of the new Senior Transfer Station/Weighbridge Operator. Congratulations Jodie!! We also welcome back for a short time, our former compactor driver, GREG DYER. Greg will be filling in as a driver. Thank you and Welcome back Greg!

CRS

CRS have been working hard with picking back up to a normal routine with lots more work to come for them over the Christmas and New year's period. The MRF has now taken on the pickup and processing of the new recycling depot, RETURN IT. Which now adds to our CRS processing.



Greg Dyer

WELCOME AND GOODBYE

We welcome a few new staff members to Anuha this November! We would like to give a big welcome to:

LACHLANN NEWBY, Lachlann has joined the MRF as a casual recycling worker on the production line.



Michael Giles



Lachlann Newby



Ben Bruce



BEN BRUCE, Ben has joined the MRF as a Driver/Operator. Ben also assists in the shed on the Plastic Press and CRS.

MICHAEL GILES, Michael has joined the MRF as MRF Shed Floor Supervisor. Michael will be focusing on the Recycling and Processing work in the shed.

We also sadly say goodbye to a few staff members this November month.

WARREN KING, Warren was an Operator/All-rounder. Warren spent most of his days working the Plastic Press and driving the Loader for the Production Line. Warren brought many qualities to the MRF that we will all miss and wish him the best of luck with his future endeavors.



Warren King

TRACEY SWIFT, Tracey was our Driver for the compactor truck. We thank her for her many laughs in her time here and wish her the best of luck on her new journey.

LES Activities

Every second Monday night from 4-6pm we have games night at Anuha. We play all sorts of fun games. We also have regular karaoke sessions and other fun activities. If you would like to join us please contact the Anuha office for more information.



Sam playing connect 4



Sam and Jodie playing games



The group singing up a storm!



Kristel and Temika dancing



Justine singing



Courtney, Tammy and Sam singing



Reece and Thomas playing cards

Cottage Industries



Our newest kitchen member - Kayla

Kitchen Kreations would like to welcome the newest member of our team, Kayla Wilson. Kayla has joined the kitchen at a very exciting time, we have been putting together Christmas gift packs and making Christmas cookies which have been very popular.

We were looking forward to having a stall at the Gatton markets to showcase our new gift boxes but unfortunately the Gatton markets were cancelled due to the rain.



Madison with a freshly decorated Christmas cookie



The Kitchen Kreations Thursday Team: DJ, Tahlia, Belinda, Darelle, Jamie and Madison



Kayla decorating Christmas biscuits

The team has been developing their catering skills by catering Anuha events such as Mandy's retirement lunch. The team did an amazing job decorating the cake, heating up and delivering all the food and creating an amazing cheese and fruit platter.



We have also changed our gift pack packaging. Good job Maddy our 2IC for searching the internet and finding our new fabulous gift boxes!

MERRY CHRISTMAS FROM THE
KITCHEN KREATIONS TEAM



DJ decorating Christmas biscuits



Kiara Hawkins



Donna Schimming



Sean Reid



Phillip Andrew



Ben Bruce



Lachlann Newby



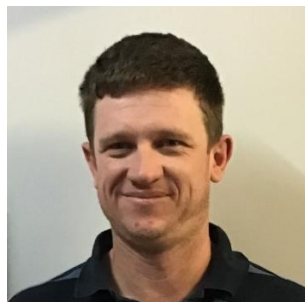
Michael Giles



Tim Grabasch



Kayla Wilson



Simon Bird



Ashleigh Turner

New Staff at Anuha

Please join us in welcoming our newest staff members and volunteers:

- LES support workers: Simon Bird, Sean Reid, Kiara Hawkins, Donna Schimming and Ashleigh Turner
- Kitchen Creations Supported Employee Kayla Wilson
- Michael Giles – MRF Shed Floor Supervisor
- MRF production worker Lachlann Newby
- MRF driver operator – Tim Grabasch, Ben Bruce
- Weighbridge operator – David Fyfe
- MRF Supported Employee Phillip Andrew



Christmas Spirit

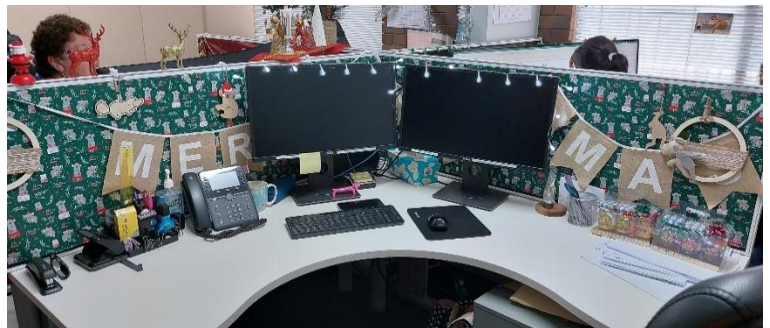
Each year Anuha staff at East street compete for the highly esteemed award for best Christmas themed desk. We are pleased to announce this year there is a trophy up for grabs. The winners name will be engraved on a Christmas bauble for all to see and praise.

The rules are simple, staff decorate their workspaces for Christmas and the one with the greatest number of votes wins! Chocolate and candy cane bribes and sabotage (including multiple kidnappings of a naughty elf) are rife!

Unanimously our winner was Jenny Crisci! Congratulations Jenny!



Jenny with her trophy



Kylie's very original Australian animal themed workspace



Just part of Jenny's spectacular display



Susan, last year's winner with her naughty elf swing



Shona's cute elves



Susan's naughty elf!



Some fierce competition from Sue Taylor this year



From the Chaplain

In the beginning was the Word, and the Word was with God, and the Word was God. ... In him was life, and that life was the light of all mankind. The light shines in the darkness, and the darkness has not overcome it. ... The true light that gives light to everyone was coming into the world. ... The Word became flesh and made his dwelling among us.

John 1:1, 4-5, 9, 14a [NIV]



How has the past year been for you? We have had Covid related restrictions, lockdowns and related intrusions on our lives, whether check-in requirements or vaccine requests. The idea of some sort of restriction because of the coronavirus now seems just a normal part of life! Some people have had health issues of one sort or another in the past year. Some people are grieving loved ones who are no longer with us. Sometimes we reach a point where all we want to do is start a new year with the hope the new year will be better. Yet even as we might hope for a better year ahead, we can fall into pit of despair and think it is all only going to get worse. The future can seem just darkness.



But between now and the new year is the celebration of Christmas! And Christmas celebrates the coming of God into our world in Jesus. John tells us in his Gospel that Jesus comes as the Word made flesh. He also describes Jesus as the light of all mankind. This light, John tells us, shines in the darkness and the darkness has not overcome it.

When we encounter the darkness, whether due to the pandemic or a changing world or just our own struggles, John tells us that the light of Jesus shines in that darkness, and the darkness cannot overcome that light. Whatever our struggle, Jesus promises to be with us through it. He promises to give his peace and joy. He promises that what we experience around us is not the whole story! He promises that he is present with us always, no matter what we go through.

Later in John's telling of the story of Jesus, we find Jesus saying to us, "**Peace I leave with you; my peace I give you. I do not give to you as the world gives. Do not let your hearts be troubled and do not be afraid.**" (John 14:27) And then still later he adds, "**I have told you these things, so that in me you may have peace. In this world you will have trouble. But take heart! I have overcome the world.**" (John 16:33)

These words of Jesus echo the angel's message in the Gospel of Luke when the birth of Jesus is announced: "**Do not be afraid. I bring you good news that will cause great joy for all the people. Today in the town of David a Saviour has been born to you; he is the Messiah, the Lord. ... Glory to God in the highest heaven, and on earth peace to those on whom his favour rests.**" (Luke 2:10,11,14)

When the dark days come, when the world around disappoints you, then cast your mind to the promise of Jesus whose birth we celebrate at Christmas. May his light shine in your darkness, may his presence with you bring peace amid troubles, and may his favour rest on you always!

Peace and joy to you! Pastor Noel

Traffic Rule Refresher

ROAD RULES > PARKING AND DISTANCES

This edition, we're covering some of the rules for parking and distances. For more information on Queensland's road rules or licensing requirements, please contact the Department of Transport and Main Roads at tmr.qld.gov.au, or by calling 13 2380.

<p>[1]</p> <p>Drivers must not park within 10m of an intersection without traffic lights, unless there are signs allowing parking there. Drivers can stop along the continuous side of a T-intersection, provided there are no signs that prohibit it.</p>	<p>[2]</p> <p>Drivers must not park within 20m of an intersection with traffic lights, unless there are signs that allow parking there.</p>
<p>[3]</p> <p>Drivers must not stop on or within 20m on approach to a children's crossing, or within 10m after a children's crossing, unless there is a sign that allows parking there.</p>	<p>[4]</p> <p>Drivers must not stop on or within 20m on approach to a pedestrian crossing, or within 10m after a pedestrian crossing, unless there is a sign that allows parking there.</p>
<p>[5]</p> <p>Drivers must not stop on or within 10m on approach to a marked foot crossing at traffic lights, that isn't at an intersection or within 3m after it, unless there is a sign that allows parking there. These distances also apply to bicycle crossings.</p>	<p>[6]</p> <p>Drivers must not stop on or within 20m of the nearest track at railway level crossings, unless there are signs that allow parking there.</p>

Rule 4 is particularly relevant as we have a zebra crossing right out the front of our East Street office. It is important that all drivers must not stop on or within 20m on approach to a pedestrian crossing or within 10m after a pedestrian crossing, unless there is a sign that allows parking there.

Step Back in Time

One of our supported employees, Ken Spengler recently found a copy of the Esk, Laidley and Gatton Shire Community Services Directory from 1993. He spotted it on the conveyer belt while he was sorting aluminium from the Lockyer Valley domestic recycling. It showcases Anuha's at the time new plastic, cardboard and newspaper baler. This piece of machinery is still used at the MRF to this day, 28 years later!

Gatton Shire Council Recycling Programme

Pictured below is the new \$16,000 Baler. For the purpose of recycling of plastic, cardboard and newspaper. The Baler has been purchased from Grant monies received from the Department of Environment and Heritage.

The Council has committed \$40,000 towards setting up of the new depot, which will be operated by the Gatton Anuha Activity Therapy

Centre. Proceeds of sales will go towards the activity centre, thus keeping the money locally.

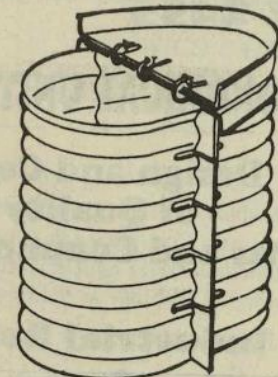
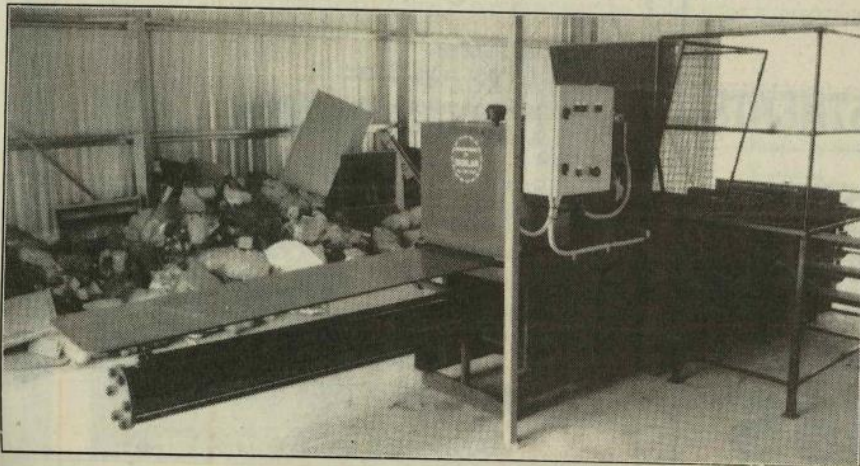
Collections carried out by Anuha have reached up to 85 per cent against an accepted world-wide rate of about 25 per cent.

"Environmentally" it has been a most positive step by the people of Gatton and goes to show how much they care about our waste.

HOME COMPOSTING

(Recycling Household Organic Waste)

Gatton Shire Council has supplied over 300 compost bins to householders throughout the shire so far. The bins are made of 100% recycled plastic. Compost is rich in nutrients for the garden, so dig it in and conserve our land fill sites. ■



Rein compost bin made with 100% recycled plastic



Merry Christmas from the team at the MRF.

Collage creation and pictures courtesy of the fabulous Nat Navie!



A Christmas Message

2021 has been a year of ongoing challenges due to the COVID pandemic, vaccine mandates and continuing to navigate the NDIS systems.

As we move forward into 2022, these challenges will still exist.

Thank you to all participants and staff for working together to keep our community safe and well during these times.

Most of all have a wonderful Christmas.

Jenny Crisci
Deputy General Manager





OUT AND ABOUT

Anuha Group Outings - Fortnightly on Fridays



All activities will be conducted according to COVID-19 guidelines and may be subject to change. Anuha will notify you if this applies to an outing of your choice. For outdoor activities, a final decision based on forecasted weather conditions will be made on the Wednesday before the outing. Departure and return times for each activity will be confirmed closer to the date.

Please wear sun smart clothing and bring a water bottle, hat and sunglasses on every outing. Covered shoes suitable for walking are recommended.

By signing below, I agree to participate in the activities which I have selected. I understand that support will be charged to my NDIS Plan at a Group Ratio dependant on numbers attending (1:1 support can be organised if required). Transport costs will be shared amongst participants attending each outing.

Please select *all* outings you would like to attend and return your completed flyer to the Anuha office by Friday December 10th 2021.

Participants wishing to attend theatre performances will need to ensure their pre-payment has been made by the date stated on this flyer so that bookings can be finalised.



Name: Signature: Date: / /2021

DATE	EVENT	APPROX COST	OTHER EXPENSES	YES	NO
14/01/2022	Swimming at Bundamba Pool, Ipswich Depart 9 am, return 2 pm	\$3.50 pool entry \$10 per person towards BBQ lunch	Transport approx. 130 km		
28/01/2022	Riverwalk and water park, Ipswich Depart 9 am, return 2 pm	\$10 towards shared BBQ lunch	Transport approx. 120 km		
11/02/2022	Mini golf and driving range City Golf Club Toowoomba Depart 9 am, return 3 pm	\$8 per game, \$20 lunch	Transport approx. 75 km		
Wednesday 23/02/2022	Frozen the Musical QPAC 1 pm performance Depart Anuha 9 am, return by 7 pm We will be using public transport for part of the trip \$200 Pre-payment required by 16/12/2021	Tickets \$150 - \$175 depending on number attending, \$40 to purchase exclusive ornament if desired, \$25 to purchase lunch	130 km plus Go Card travel across 3 zones		
11/03/2022	Cormorant Bay, Wivenhoe Dam Depart 9 am, return 3 pm	\$10 per person towards BBQ lunch	Transport 100 km		
25/03/2022	We Will Rock You Empire Theatre Toowoomba 7:30 pm performance Depart Anuha 5 pm, return by 11 pm \$75 Pre-payment required by 19/01/2021	Tickets \$50 - \$55 depending on number attending \$25 to purchase dinner	Transport approx 80 km		
08/04/2022	Dancing and karaoke Peace Lutheran Church hall 2 pm – 7 pm	Cost TBA \$10 towards BBQ dinner			
22/04/2022	Movie at Limelight Cinemas and lunch at Rashay's Depart 9 am, return 3 pm	Movie \$8.50 \$20 to purchase lunch	Transport approx. 120 km		



06/05/2022	The Barn and Scotty's Garage Depart 9 am, return 2 pm	\$10 entry \$20 lunch	Transport approx. 70 km		
20/05/2022	Brisbane Planetarium and Botanical Gardens Depart 9 am, return 3 pm	\$10 entry, \$20 to purchase lunch	Transport approx. 170 km		
03/06/2022	Movie at Grand Central Lunch at Picnic Point, Toowoomba Depart 9 am, return 3 pm	Movie \$16.50 \$20 to purchase lunch	Transport approx. 75 km		
17/06/2022	Theme Park: Details to be confirmed in March 2022 Proposed departure 8.30 am, return 5.30 pm	TBA	Transport approx. 250 km		

THE OFF-ROADERS

Hiking, Camping, Fishing and Adventures - Fortnightly on Fridays



All activities will be conducted according to COVID-19 guidelines and may be subject to change. Anuha will notify you if this applies to an outing of your choice. Please wear sun smart clothing and bring a full water bottle, hat, sunscreen and sunglasses for all activities. You will also need comfortable enclosed footwear.

By signing below, I agree to participate in the activities which I have ticked. I understand that support will be charged to my NDIS Plan at a Group Ratio dependant on numbers attending.

Name: Signature: Date: / /2022

Some activities will include a shared meal. If you have any food allergies or special dietary requirements please list them here:

.....

DATE	EVENT	COST	TRANSPORT (approx)	YES	NO
01/07/2022	Brisbane Air Show	entry \$15 lunch	km approx		
15/07/2022	Mini golf Toowoomba	entry \$15 lunch	km approx		



29/07/2022	Hiking at Peak Crossing	\$10 for shared lunch	km approx		
12/08/2022 and 13/08/2022	Camping at Murphy's Creek	\$50 campsite, \$70 food	km approx		
26/08/2022	One Tree Canoe Company Beginners' Moving Water experience: 3 hours down river from Vernor to Savages Crossing (near Fernvale) Depart 9 am, return 3 pm Subject to COVID restrictions	\$15 for lunch \$50 canoeing	100 km approx		
09/09/2022	Brisbane Valley Rail Trail	\$15 for lunch			
23/09/2022	Indoor Rock climbing		km approx		
07/10/2022 and 08/10/2022	Camping and hiking at Crow's Nest Falls *UNEVEN SURFACES* Walking tracks and rock pools	\$15 for lunch	125 km approx		
21/10/2022	Denmark Hill conservation area	\$15 for lunch	km approx		
04/11/2022	Brisbane Public Transport Train from Rosewood Station City Cat ferry ride	\$15 lunch \$25 Go Card	85 km approx.		
18/11/2022 and 19/11/2022	Camping at Captain Logans Inlet	Fishing licence lunch			
02/12/2022	Kloud9ine trampolining	Entry Lunch	km approx		



16/12/2022	Gatton Christmas carnival and Christmas lights (combined outing with Out and About group)	tba	tba		
------------	---	-----	-----	--	--